



Product Catalogue 06 sec 04
Fan Coil Unit type AFCU-B



Aeron fan coil unit type B is designed for local cooling in technical room, Instrument room, Engine control room and similar.

Aeron fan coil type B comes in 3 different models; with a plenum chamber, prepared for duct or down stream.

For the plenum chamber unit the air stream can be adjusted, both in vertically and horizontally direction.

The unit is made of galvanized steel plates. It is insulated and equipped with a drip tray with outlet for condensate water.

It shall be connected to a chilled water plant, added 15% Ethylene glycol, and is designed for 100% return air.

The inside fan is mounted on vibration dampers.

The fan coil is equipped with a 1-speed electrical motor, Insulation class F, suitable for marine environments. The unit will be delivered with built in control panel for Start/Stop of unit as a standard.

Optional it can be controlled with a frequency converter, or from a remote panel.

All units are delivered with a G4 filter on air inlet. Dirty or damaged filter must be replaced. Easy access to fan, cooling coil and filter inside unit through hinged front door. The units are standard delivered with a set of mounting brackets, for secure installation.

AIR DATA:

Type	Air volume	Face velocity	Inlet temperature	Outlet temperature	Inlet humidity	Outlet humidity
AFCU-10-CW-B	1.700 m3/h	2,13 m/s	27°C	15°C	50% RH	91% RH
AFCU-15-CW-B	2.500 m3/h	2,24 m/s	27°C	15°C	50% RH	83,5% RH
AFCU-20-CW-B	3.800 m3/h	2,34 m/s	37°C	15°C	50% RH	91% RH
AFCU-25-CW-B	4.500 m3/h	2,15 m/s	27°C	15°C	50% RH	88,2% RH
AFCU-30-CW-B	5.500 m3/h	2,18 m/s	27°C	15°C	50% RH	89% RH
AFCU-40-CW-B	7.000 m3/h	2,16 m/s	27°C	15°C	50% RH	86% RH
AFCU-50-CW-B	8.000 m3/h	1,91 m/s	27°C	15°C	50% RH	80,7% RH

Type	External air pressure	Noise level	Cooling capacity
AFCU-10-CW-B	350 Pa	74 dB	10 kW
AFCU-10-CW-B Plenum	50 Pa	65 dB	10 kW
AFCU-15-CW-B	350 Pa	73 dB	15 kW
AFCU-15-CW-B Plenum	50 Pa	65 dB	15 kW
AFCU-20-CW-B	350 Pa	75 dB	20 kW
AFCU-20-CW-B Plenum	50 Pa	67 dB	20 kW
AFCU-25-CW-B	350 Pa	73 dB	25 kW
AFCU-25-CW-B Plenum	50 Pa	67 dB	25 kW
AFCU-30-CW-B	450 Pa	67 dB	30 kW
AFCU-30-CW-B Plenum	50 Pa	77 dB	30 kW
AFCU-40-CW-B	450 Pa	70 dB	40 kW
AFCU-40-CW-B Plenum	50 Pa	77 dB	40 kW
AFCU-50-CW-B	450 Pa	70 dB	50 kW
AFCU-50-CW-B Plenum	50 Pa	77 dB	50 kW

FLUID SIDE DATA:

Type	Water inlet temperature	Water outlet temperature	Water flow	Water pressure drop	Condensate
AFCU-10-CW-B	6°C	12°C	0,4 l/s	50 kPa	3,94 l/h
AFCU-15-CW-B	6°C	12°C	0,6 l/s	50 kPa	6,57 l/h
AFCU-20-CW-B	6°C	12°C	0,8 l/s	50 kPa	8,66 l/h
AFCU-25-CW-B	6°C	12°C	1, l/s	80 kPa	10,26 l/h
AFCU-30-CW-B	6°C	12°C	1,2 l/s	80 kPa	12,54 l/h
AFCU-40-CW-B	6°C	12°C	1,6 l/s	80 kPa	15,96 l/h
AFCU-50-CW-B	6°C	12°C	2,0 l/s	80 kPa	18,24 l/h

ELECTRICAL DATA:

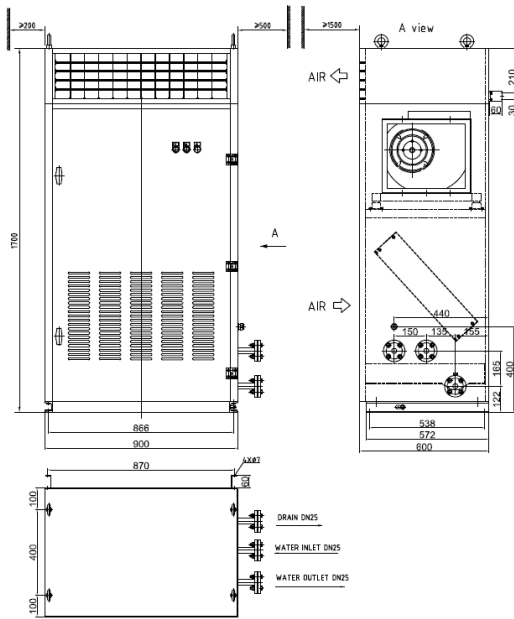
Type	3~ motor	Voltage	Frequency	Power	Rated current
AFCU-10-CW-B	MS-80 M1 1-6	Δ 230V	50Hz/ 60Hz	0,37kW/	0,43kW
AFCU-10-CW-B	MS-80 M1 1-6	Y 440V	50Hz/ 60Hz	0,37kW/ 0,43kW	Y1,25A/ 1,35A
AFCU-10-CW-B Plenum	MS-80 2-4	Δ 230V	50Hz/ 60Hz	0,75kW/ 0,87kW	
AFCU-10-CW-B Plenum	MS-80 2-4	Y 440V	50Hz/ 60Hz	0,75kW/ 0,87kW	Y2,05A/ 2,25A
AFCU-15-CW-B	MS-80 3-4	Δ 230V	50Hz/ 60Hz	1,1kW/ 1,3kW	
AFCU-15-CW-B	MS-80 3-4	Y 440V	50Hz/ 60Hz	1,1kW/ 1,3kW	Y2,7A/ 3A
AFCU-15-CW-B Plenum	MS-80 M2-6	Δ 230V	50Hz/ 60Hz	0,55kW/ 0,64kW	
AFCU-15-CW-B Plenum	MS-80 M2-6	Y 440V	50Hz/ 60Hz	0,55kW/ 0,64kW	Y1,75A/ 1,9A
AFCU-20-CW-B	MS-90 L-4	Δ 230V	50Hz/ 60Hz	1,5kW/ 1,7kW	
AFCU-20-CW-B	MS-90 L-4	Y 440V	50Hz/ 60Hz	1,5kW/ 1,7kW	Y3,5A/ 3,8A
AFCU-20-CW-B Plenum	MS-80 M2-6	Δ 230V	50Hz/ 60Hz	0,55kW/ 0,64kW	
AFCU-20-CW-B Plenum	MS-80 M2-6	Y 440V	50Hz/ 60Hz	0,55kW/ 0,64kW	Y1,75A/ 1,9A
AFCU-25-CW-B	MS-90 L-4	Δ 230V	50Hz/ 60Hz	1,5kW/ 1,7kW	
AFCU-25-CW-B	MS-90 L-4	Y 440V	50Hz/ 60Hz	1,5kW/ 1,7kW	Y3,5A/ 3,8A
AFCU-25-CW-B Plenum	MS-90 S-6	Δ 230V	50Hz/ 60Hz	0,75kW/ 0,87kW	
AFCU-25-CW-B Plenum	MS-90 S-6	Y 440V	50Hz/ 60Hz	0,75kW/ 0,87kW	Y2,2A/ 2,4A

AFCU-30-CW-B	MS-90 L2-4	Δ 230V	50Hz/ 60Hz	2,2kW/ 2,5kW	
AFCU-30-CW-B	MS-90 L2-4	Y 440V	50Hz/ 60Hz	2,2kW/ 2,5kW	Y4,8A/ 5,2A
AFCU-30-CW-B Plenum	MS-90 L-6	Δ 230V	50Hz/ 60Hz	1,1kW/ 1,3kW	
AFCU-30-CW-B Plenum	MS-90 L-6	Y 440V	50Hz/ 60Hz	1,1kW/ 1,3kW	Y3,1A/ 3,4A
AFCU-40-CW-B	MS-100 L1-4	Δ 230V	50Hz/ 60Hz	2,2kW/ 2,6kW	Δ8,12A/8,12A
AFCU-40-CW-B	MS-100 L1-4	Y 440V	50Hz/ 60Hz	2,2kW/ 2,5kW	Y4,7A/ 5,2A
AFCU-40-CW-B Plenum	MS-90 L-6	Δ 230V	50Hz/ 60Hz	1,1kW/ 1,3kW	Δ5,48A/ 5,48A
AFCU-40-CW-B Plenum	MS-90 L-6	Y 440V	50Hz/ 60Hz	1,1kW/ 1,3kW	Y3,1A/ 3,4A
AFCU-50-CW-B	MS-100 L2-4	Δ 230V	50Hz/ 60Hz	3,0kW/ 3,6kW	Δ11,5A/ 11,5A
AFCU-50-CW-B	MS-100 L2-4	Y 440V	50Hz/ 60Hz	3,0kW/ 3,5kW	Y6,6A/ 7,2A
AFCU-50-CW-B Plenum	MS-100 L-6	Δ 230V	50Hz/ 60Hz	1,5kW/ 1,8kW	Δ6,78A/ 6,78A
AFCU-50-CW-B Plenum	MS-100 L-6	Y 440V	50Hz/ 60Hz	1,5kW/ 1,7kW	Y3,8A/ 4,1A

Type	Net weight w/el-motor	Weight el-motor
AFCU-10-CW-B, Plenum	180 kg	10 kg
AFCU-10-CW-B, Down stream/ Duct	180 kg	12 kg
AFCU-15-CW-B, Plenum	200 kg	12 kg
AFCU-15-CW-B, Down stream/ Duct	200 kg	13,5 kg
AFCU-20-CW-B, Plenum	260 kg	12 kg
AFCU-20-CW-B, Down stream/ Duct	240 kg	17 kg
AFCU-25-CW-B, Plenum	280 kg	14 kg
AFCU-25-CW-B, Down stream/ Duct	260 kg	17 kg
AFCU-30-CW-B, Plenum	300 kg	17
AFCU-30-CW-B, Down stream/ Duct	300 kg	18
AFCU-40-CW-B, Plenum	330 kg	17
AFCU-40-CW-B, Down stream/ Duct	340 kg	23
AFCU-50-CW-B, Plenum	370 kg	23
AFCU-50-CW-B, Down stream/ Duct	370 kg	26

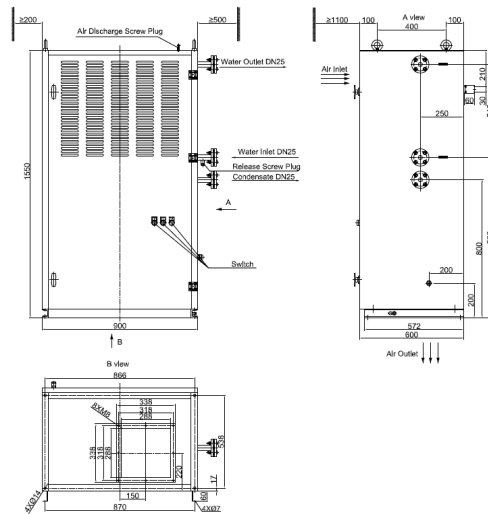
AFCU-15-CW-B

Plenum



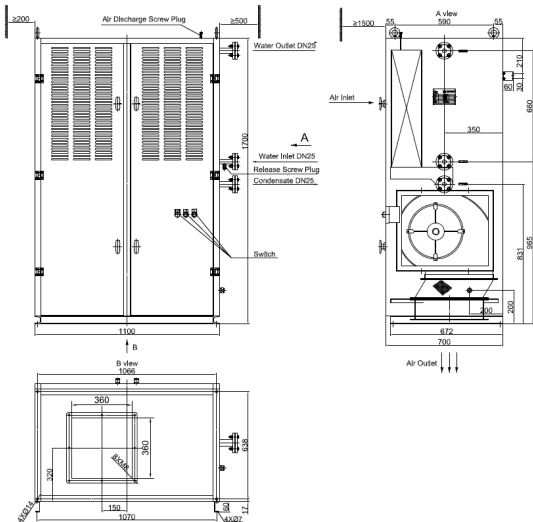
AFCU-15-CW-B

Bottom



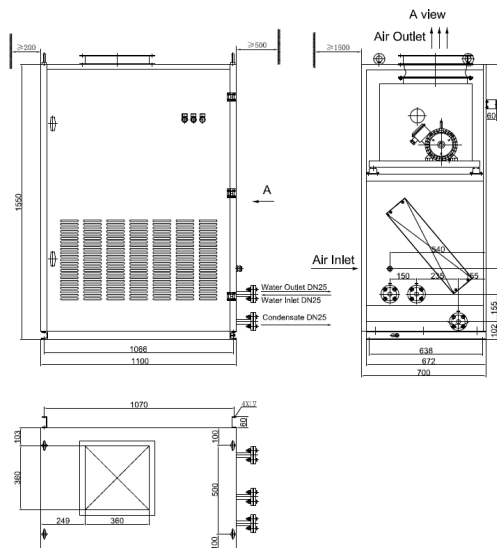
AFCU-20-CW-B

Bottom



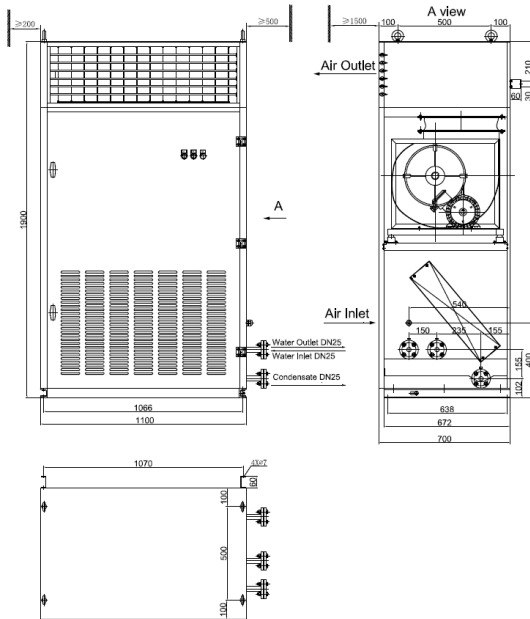
AFCU-20-CW-B

Duct



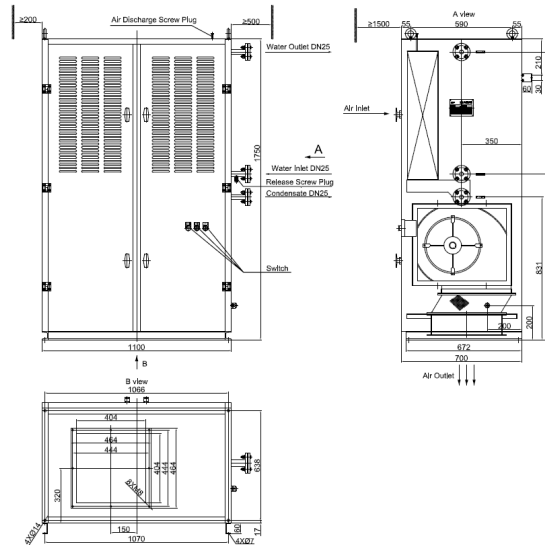
AFCU-20-CW-B

Plenum



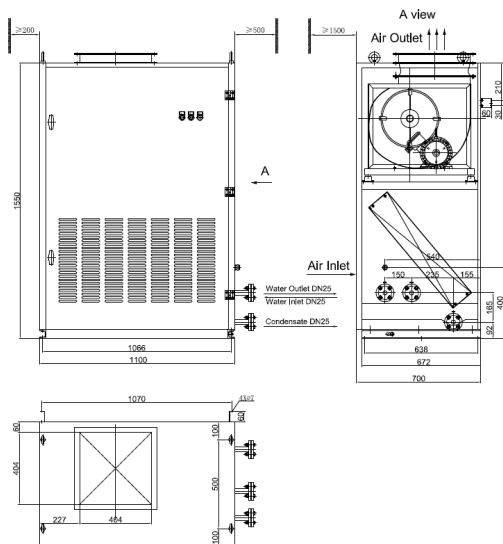
AFCU-25-CW-B

Bottom



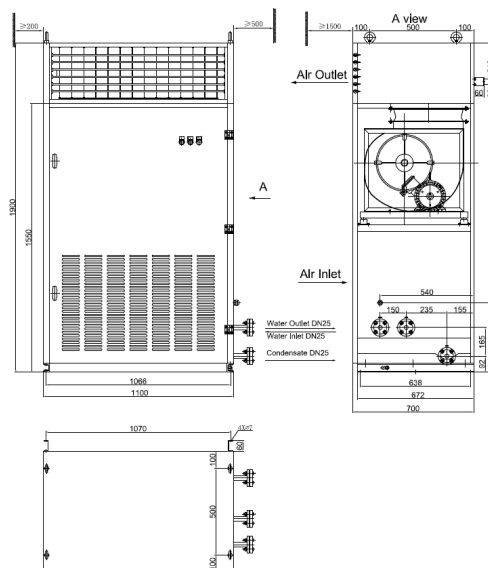
AFCU-25-CW-B

Duct



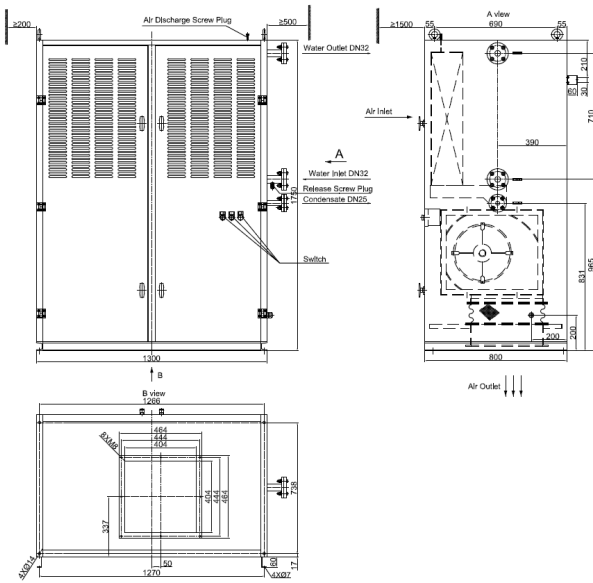
AFCU-25-CW-B

Plenum



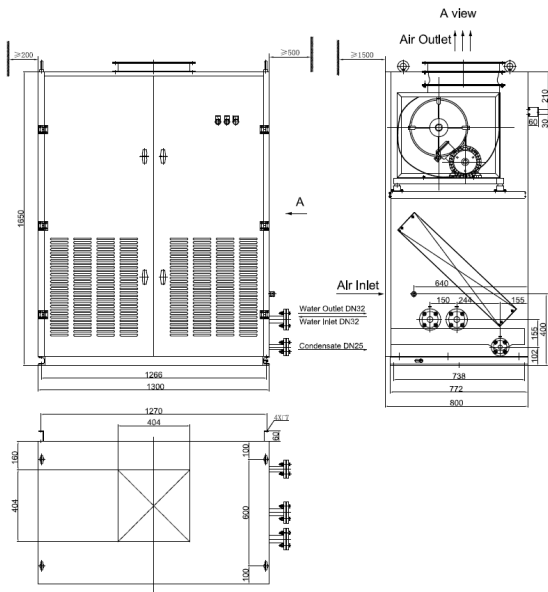
AFCU-30-CW-B

Bottom



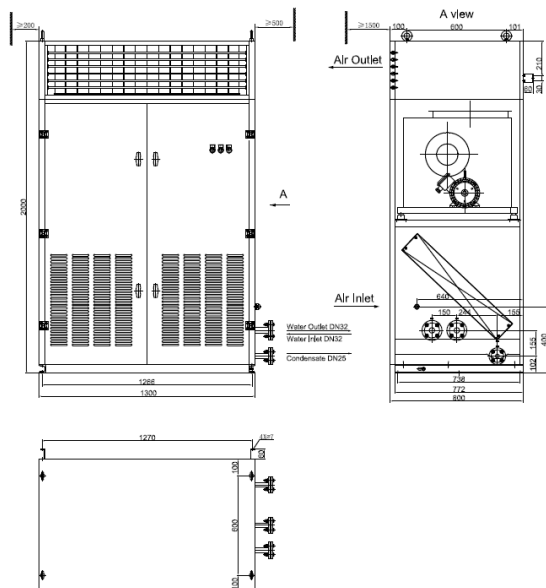
AFCU-30-CW-B

Duct



AFCU-30-CW-B

Plenum



AFCU-40-CW-B

Bottom

